

SmokyJoy[®]

Crm-E3

Electric Cigarette Rolling Machine

User Manual



Adjustable
Rolling Speed

Please keep this manual safe (as a backup). Read it carefully before using this product.



TABLE OF CONTENTS

Machine Description 01

Accessory List 02

Safety Warnings 03

Operation Instructions

• **Filling Cigarette Tubes 04**

• **Filling Cone 05**

• **Replacing Stainless-Steel Metal
Pipe and Spiral Wire 07**

Blockage Prevention 08

Cleaning After Blockage 09

Cleaning and Maintenance 10

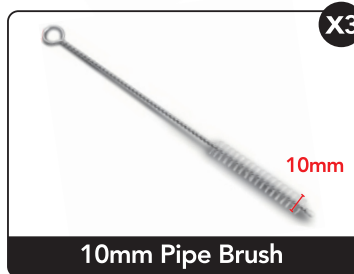
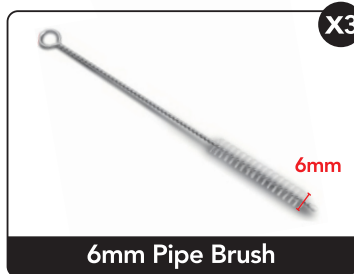
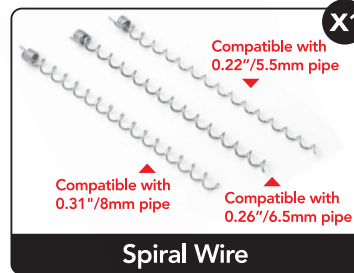
Frequently Asked Questions 11

Model Overview and Comparison 13

Machine Description



Accessory List



Safety Warnings



Please keep fingers away from the hopper to prevent injuries.



The tip of the stainless-steel metal pipe is very sharp. Do not touch it with your fingers to avoid scratches.



If the machine stops due to blockage, do not keep pressing the button to avoid motor damage.



Disconnect the power supply when the machine is not in use to prevent potential accidents.



Do not rinse the machine directly with water.



Keep the machine out of reach of children.



Keep away from fire.

Filling Cigarette Tubes

Safety Tips: Do not put your hands into the hopper while the machine is switched on.



Step 1

Connect the power supply.



Step 2

Press the rod control button to lower the support rod to the minimum position.



Step 3

Slide the empty cigarette tube of the correct size onto the stainless-steel metal pipe.



Step 4

Rotate the tightness adjustment knob to adjust the cigarette tightness.



Step 5

Rotate the speed control knob to change the cigarette rolling speed.



Step 6

Put tobacco into the hopper.



Step 7

Press and hold the start button to fill the cigarette. Use a brush to gently stir the tobacco to assist with feeding.



Step 8

Once the tube is full, release the button to stop rolling.

Filling Cone

Safety Tips: Do not put your hands into the hopper while the machine is switched on.

Tips



Using the largest stainless-steel metal pipe (0.31"/8mm) and the correct spiral wire for smoother rolling.

Step 1



Connect the power supply.

Step 2



Unscrew the lid of the cone loader, put the pre-roll cone into it, close the lid, and twist to lock.

Step 3



Press the rod control button to lower the support rod to the minimum position.

Step 4



Slide the cone loader onto the stainless-steel metal pipe.

Step 5



Rotate the tightness adjustment knob to adjust the cigarette tightness.

Filling Cone

Safety Tips: Do not put your hands into the hopper while the machine is switched on.

Step 6



Rotate the speed control knob to change rolling speed.

Step 7



Put tobacco into the hopper.

Step 8



Press and hold the start button to fill the cone. Use a brush to gently stir the tobacco to assist with feeding.

Step 9



Once the cone is full, release the button to stop rolling.

Replacing Stainless-Steel Metal Pipe and Spiral Wire

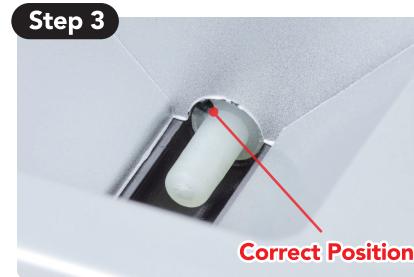
Safety Tips: Before replacing the metal pipe, ensure that the power supply is turned off and the machine has cooled down.



Rotate left to loosen the nut and pull out the stainless-steel metal pipe.



Pull out the spiral wire.



Note that there is a small hole at the bottom of the hopper for fixing the spiral wire.



Insert the replacement spiral wire into the small hole to secure it.



Keep the rod control button pressed and install the stainless-steel metal pipe.



Rotate the nut to the right to secure the stainless-steel metal pipe. Replacement is complete.

Blockage Prevention



Do not use excessively humid tobacco; it is recommended to use tobacco with **humidity <12%**.



Avoid using fine-cut or long-cut tobacco; it is recommended to use tobacco with a cut length **not exceeding 20 mm** for stable filling results.



Clean the metal pipe and spiral wire after each use to prevent residue accumulation. For more tips, refer to '**Cleaning and Maintenance**' on page 10.

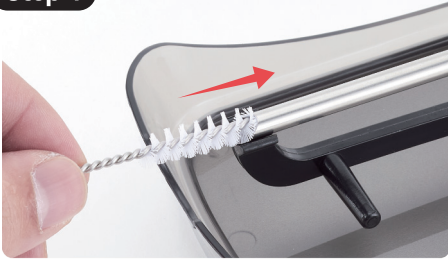


Do not overfill the hopper with tobacco; the amount of tobacco should not exceed the height of the hopper. **Overfilling may cause blockage.**

Cleaning After Blockage

Solution 1 (During Use)

Step 1



Fully insert the 6mm pipe brush into the stainless-steel metal pipe.

Step 2



Hold the pipe brush and press the start button until all residue is removed.

Solution 2 (After Use)

Step 1



Remove the stainless-steel metal pipe and spiral wire.

Step 2



Use the 10mm pipe brush to remove residue.

If these methods do not resolve the blockage, disassemble and clean the machine; Refer to [page 10](#) ('Cleaning and Maintenance') for more tips.

Cleaning and Maintenance

To ensure the machine demonstrates high performance and to extend its service life, please follow the steps below for regular cleaning.

Step 1



Unplug the power cord to disconnect the power supply.

Step 2



Rotate the nut to the left to remove the stainless-steel metal pipe.

Step 3



Remove the spiral wire.

Step 4



Clean the residue on the metal pipe with the 10mm pipe brush.

Step 5



Use the 10mm pipe brush to remove the residue at the feed inlet.

Tips



Alcohol can effectively dissolve residue. If the metal pipe and spiral wire have sticky residue, they can be deep-cleaned in alcohol.

Frequently Asked Questions

Q: Why doesn't the machine operate when powered on?

A: The motor may be clogged. You can disassemble the machine and clean each component. Refer to '**Cleaning and Maintenance**' on **page 10** for more tips.

Q: Can I use sticky or humid herbs?

A: We don't recommend it. High-viscosity or humid raw materials will quickly form resin deposits on the pipe wall and spiral wire, increasing friction and jamming the motor. If you want to use sticky or humid tobacco, we recommend that you **replace the largest-size stainless-steel metal pipe and spiral wire** to reduce the risk of clogging.

Q: What if the rolled cigarette is too tight to smoke?

A: If the rolled cigarette is too tight, possible reasons include: overly fine-cut tobacco, excessively tight machine settings, or a clogged stainless-steel metal pipe. We recommend that you rotate the tightness adjustment knob first. If that doesn't work, please clean the stainless-steel metal pipe.

Q: What if the rolled cigarette is too loose?

A: If the rolled cigarette is too loose, it may be due to overly dry tobacco. You can humidify the tobacco, rotate the tightness adjustment knob to a tighter gear, or gently tap it vertically on the table after rolling to make the finished product more compact.

Frequently Asked Questions

Q: Why does the machine become less powerful or slower?

A: The motor may be overloaded due to accumulated tobacco. Please deep-clean the machine and refer to '**Cleaning and Maintenance**' on page 10 for more tips.

Q: Is it normal for the machine to make loud noises?

A: The electric motor makes mechanical noises when operating at high speeds, which is normal. However, if you hear sharp metal friction or abnormal jamming, switch the machine off immediately and inspect it. The noise may be due to the spiral wire not being installed properly or hard objects may be stuck inside.

Q: Do the tools need regular cleaning?

A: Yes, regularly cleaning the tools can prevent contamination.

Model Overview and Comparison



Crm-E1



Crm-E2



Crm-E3

Roll Regular Cigarettes



Roll Slim Cigarettes



Roll Ultra-Slim Cigarettes



Roll Cones

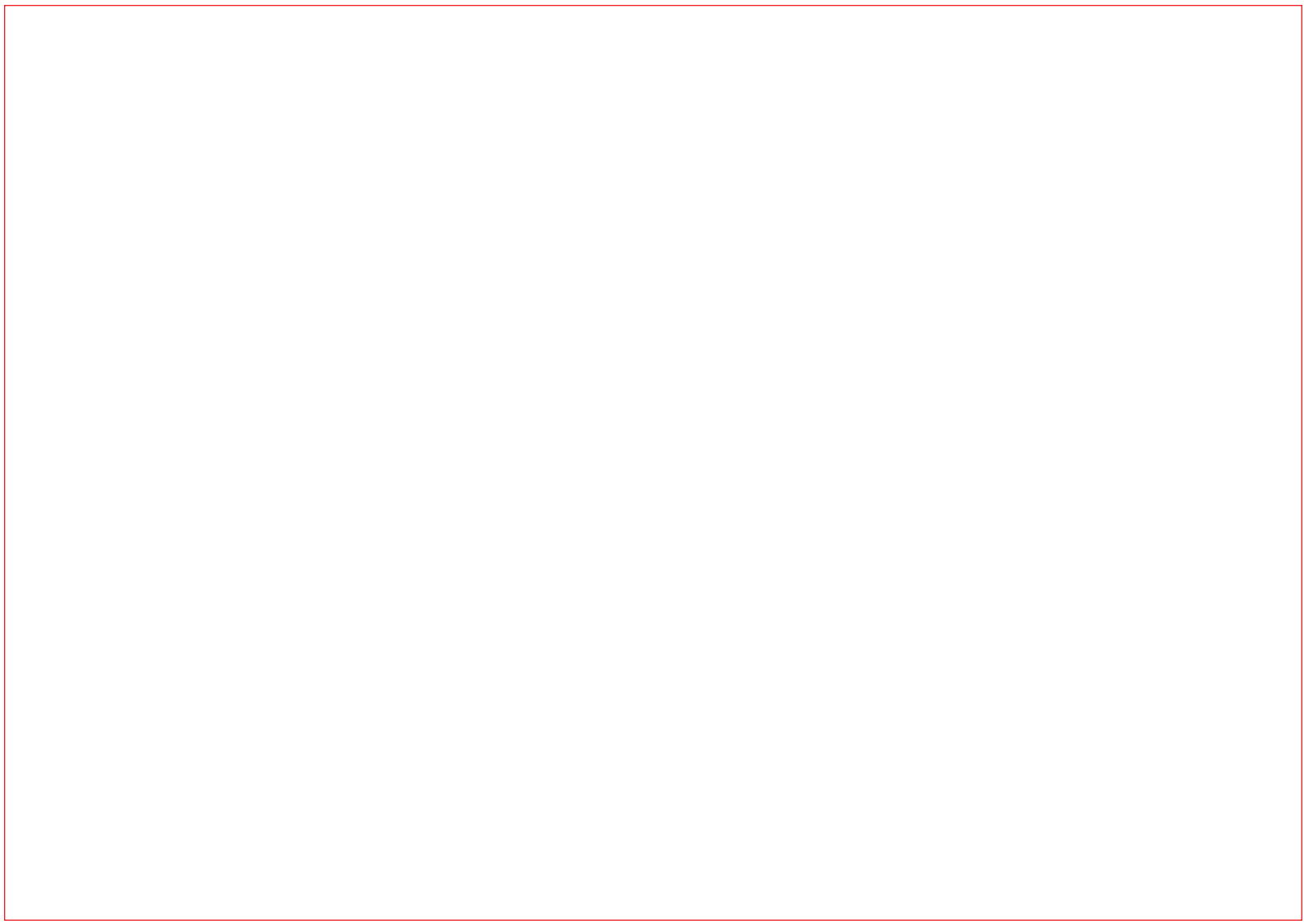


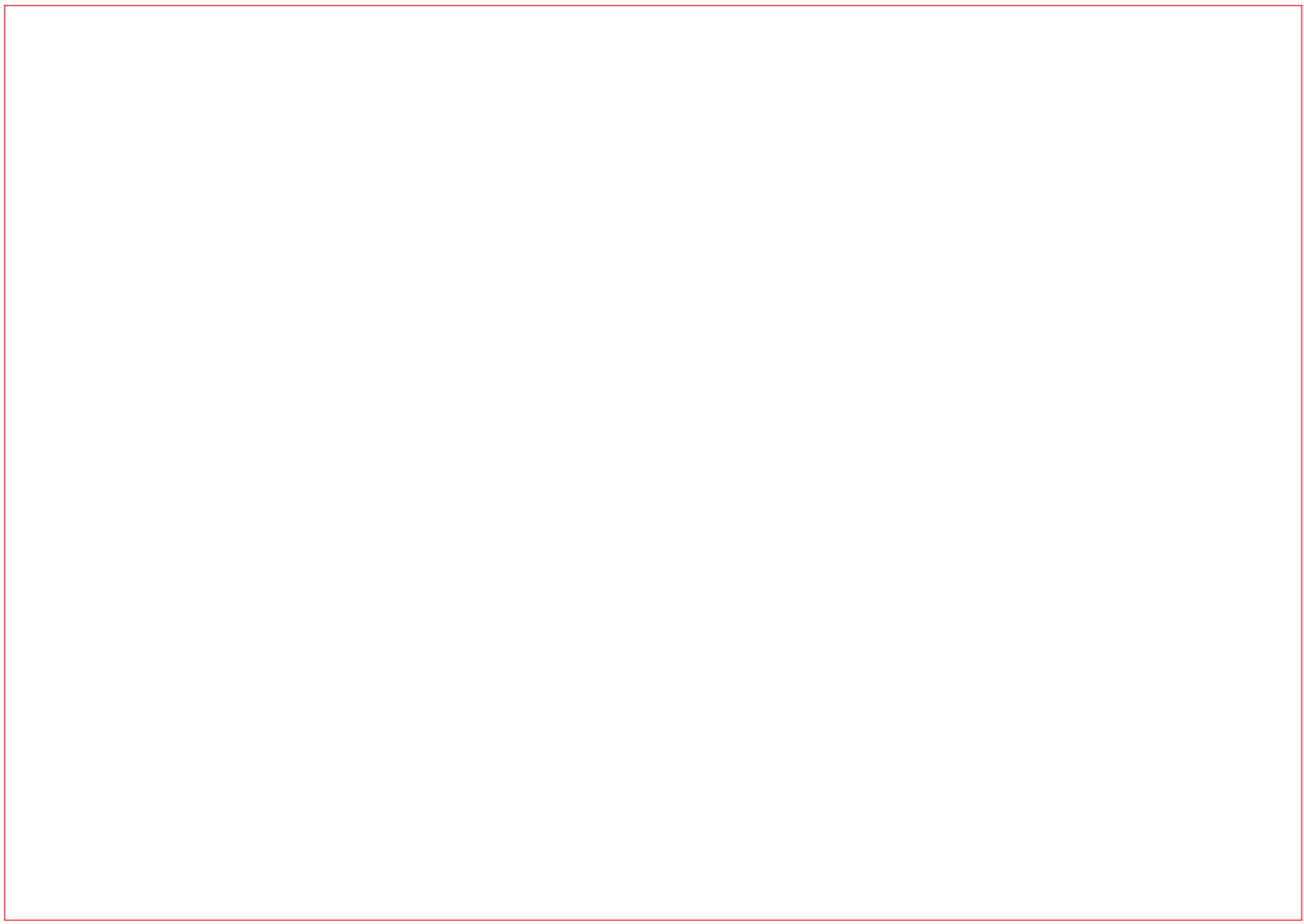
Rechargeable

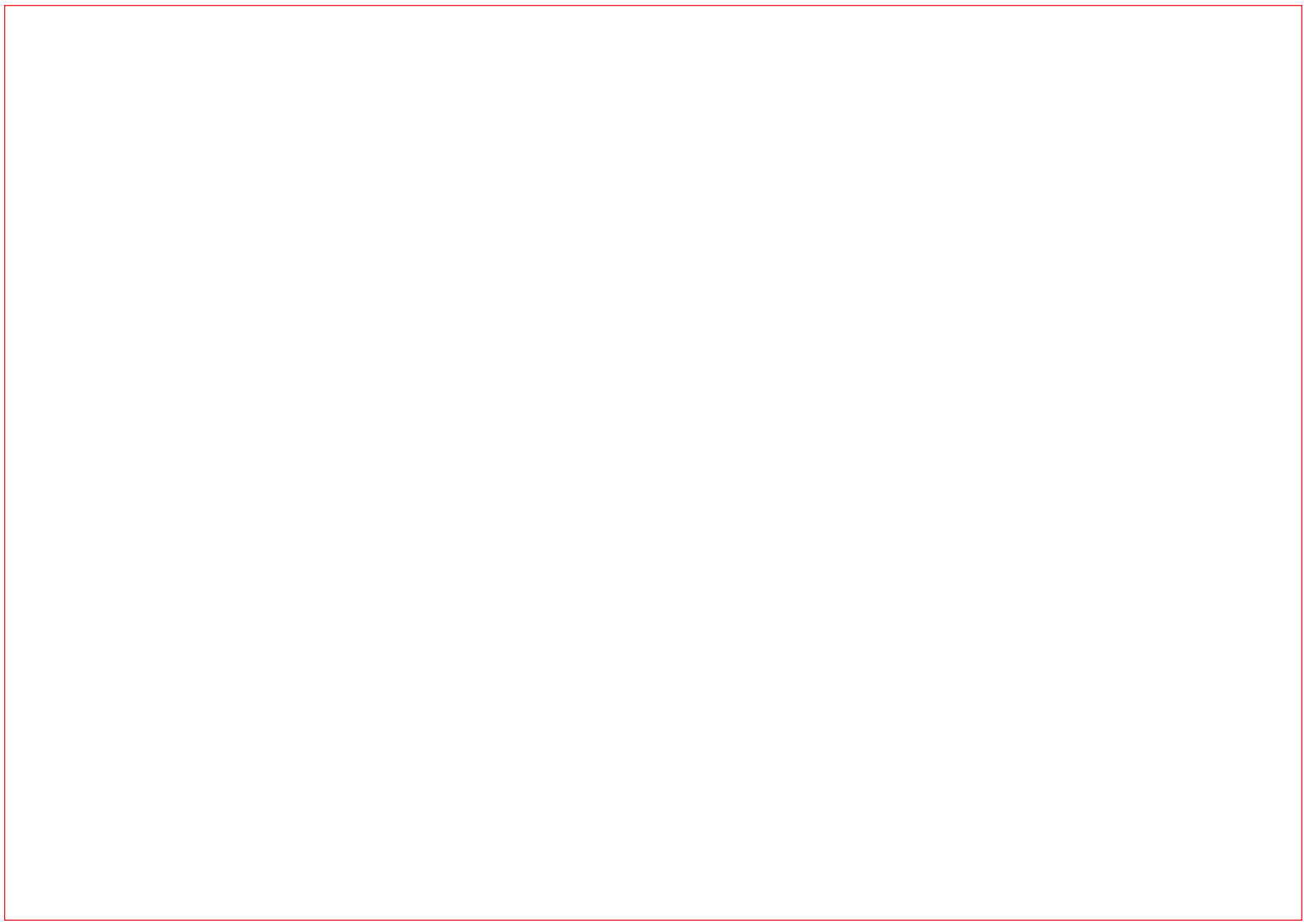


Adjustable Speed











For more information,
visit us at:
www.smokyjoy.com



Scan to discover more
SmokyJoy products
on **Amazon**.



If you have any questions or issues,
feel free to contact us at: info@smokyjoy.com

WARNING: This product would expose you to tobacco smoke, which is known to the state of California to cause cancer, birth defects, or other reproductive harms.

For more information go to
www.P65Warnings.ca.gov



FOR INDOOR USE ONLY

